

NEW

USER MANUAL

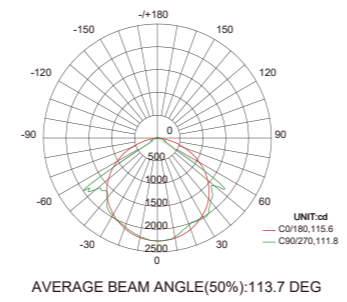
TUBU

TB-T720 Plant Grow Light

PGLE Series
经典版植物灯

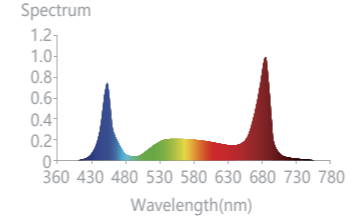
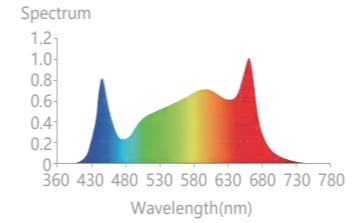
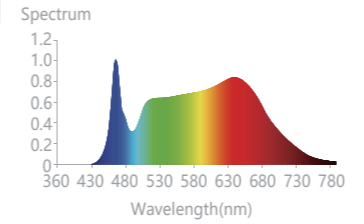
www.tubuled.com

TB-T720



1. Technical Specifications

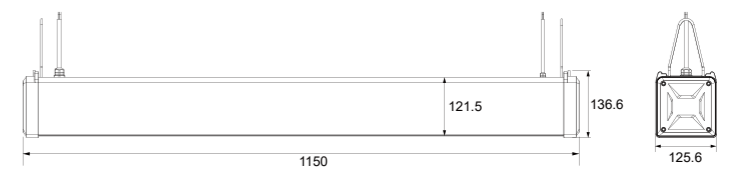
PRODUCT CODE	TB-T720
Wattage	720W
PPF	1944umol/S
PPE	2.7 umol/J
Input Voltage/frequency	100-277V/AC
Spectrum	FST 330~880nm
Heat Dissipation Method	Integrated Heat Dissipation Structure
Structure Material	Aluminium Alloy
Operating Temperature	-20~45 C ,20~95%RHNo condensation
Beam Angle	110°x115° Rectangular Beam
Ip Grade	IP65
Warranty	3 years
Dimension	1150*95*78mm
Packing Size	1178X168X185mm
Packing Quantity	1PC
Net Weight	8.8kg
Gross Weight	9.8kg



2. Assembly Instructions

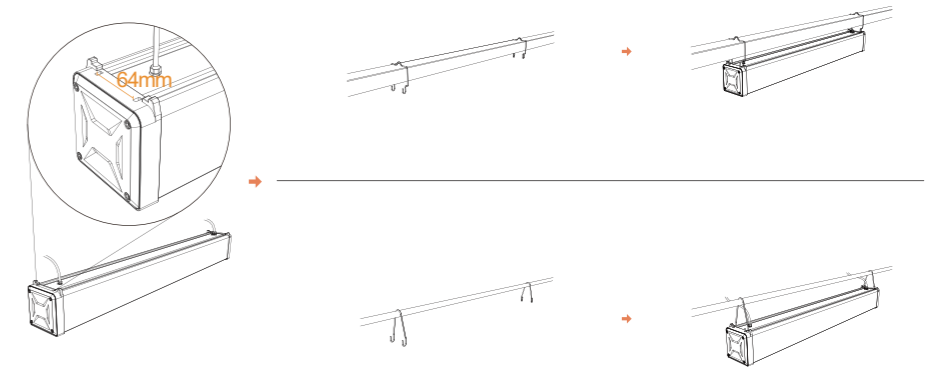
- Open the package, take out the product,fix the led strip on the frames of PGLE OR PGLE-N through the extension-type neck ends of the product.
- onnect the power-line(optional configuration) to the lamp and tighten it;
- Insert the plug into the socket.

2.1 PGLE-T Plant Growth Lamp SIZE

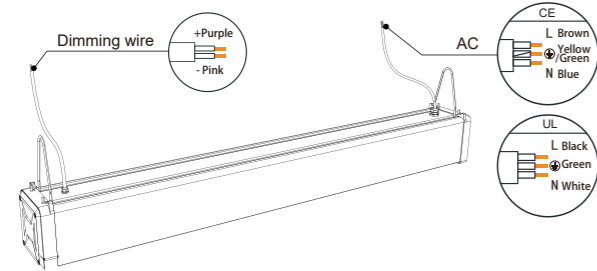


2.2 Installation Sketch Map

The bracket can be customized for multi-scenario installation.



2.3 Wiring Diagram



2.4 Supports the controller dimming function



3. Important Safety Precautions

Please read the manual thoroughly before attempting to install or operate LED Grow Light and keep it for future reference.

Connect the light only to the power sources of the appropriate voltage using the plug received. Protect power cables from being pinched or damaged, especially where the power cable enters the power outlet and the unit.

If the provided plug does not fit your socket, please contact us for help by email immediately. Please do not replace the power cord or plug by yourself, otherwise we are not responsible for man-made damages. The system should only be cleaned as directed in the manual. You should seek service by qualified service personnel if any of the following occur:

1. The power-supply cord or the plug has been damaged;
2. The unit has been exposed to rain;
3. The unit exhibits a marked change in performance;
4. The unit has been dropped, or its enclosure or chassis is damaged.

4. General Care

-This LED Grow light is passively cooled with zero moving components. It is designed for harsh environments and years of maintenance-free performance. Some basic care will keep your lights working at peak performance cycle-after-cycle.

-Natural convection removes heat away from the heat sink. In order to properly cool itself, at least one inch of space is required between the fixture and the roof of your grow area. Failure to do so may shorten the fixture's lifespan.

-To achieve the optimal lifespan and performance of your fixtures, routinely check for and remove excess dust, debris, and mineral build up from heat sink and LED array. Cleaning should always be done with the fixture or using low-pressure compressed air with unplugged from its power source.

5. Caution

-In summer or other hot environment, please use a cooling fan to keep a suitable temperature for your plants.

6. Warning

- Do NOT touch while in operation.
- To prevent eye damage, avoid looking directly at the LEDs.
- To reduce the risk of overheating or fire, always allow for adequate ventilation of fixtures and power supplies.

- Read through this manual before installation.
- Handle the product with care.
- The product must be grounded.
- This product must be installed and maintained by certified electrician.
- Consult with the manufacturer before maintenance.
- Turn OFF the power before installation and maintenance.
- Make sure the products are securely installed.
- The housing might become hot after operation.
- Primary use: auxiliary lamp used to promote plant growth and maturity.
- Make sure the construction is strong enough to support the products.
- The external flexible cable or cord of this luminaire cannot be replaced; if the cord is damaged, the luminaire shall be destroyed.