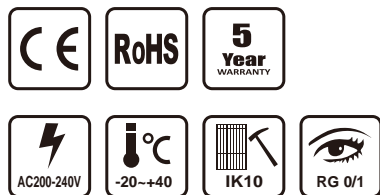


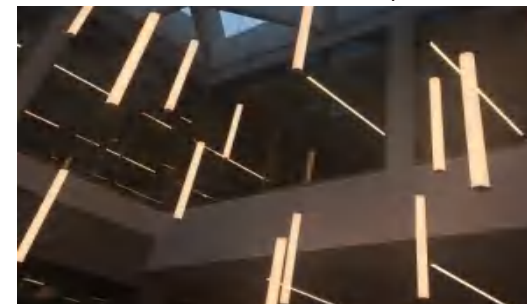
## Features

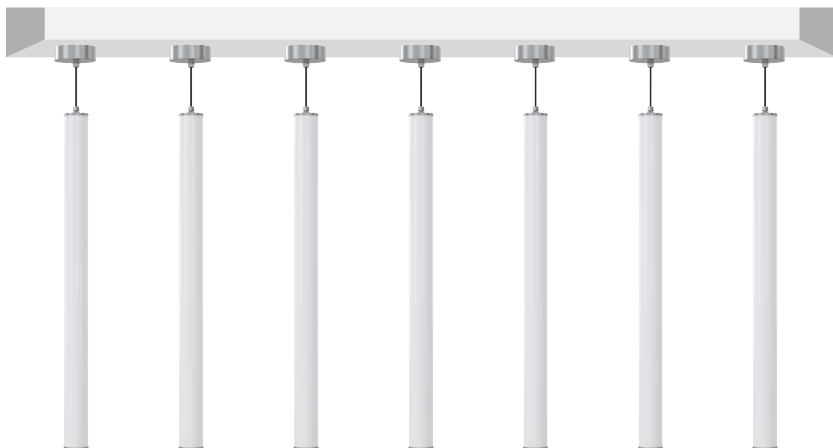
- IP40
- PC IK08
- System efficiency up to 100Lm/W
- High CRI>80
- Environmentally friendly, no mercury, no UV, no IR
- Wide beam angle 360°
- Quick start instant 100% luminous flux
- 5 years warranty on complete fixture (LED's, driver & housing)
- Certificate: CE, RoHs Certified
- Surface Mount or Suspension Mount



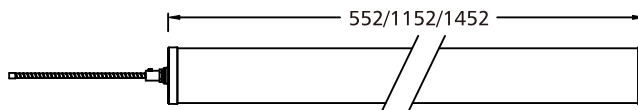
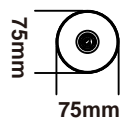
## Applications

- Shopping malls
- Museums
- Exhibition halls
- Restaurants
- Bars
- Cafes
- Parking lots
- Laboratories
- Workshops and factories
- Tunnels and basements
- Metro and railway stations
- Hospital

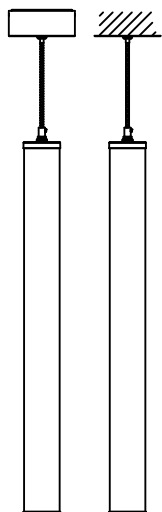




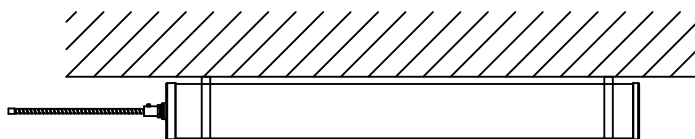
Single Installation



Vertical installation



Surface Mount



## Specifications

Product Code	TBL92F-20W	TBL94F-30W	TBL95F-40W
Power	20W	30W	40W
Input Voltage	200-240VAC (50/60HZ)		
Input Current	0.1A@220VAC	0.21A@220VAC	0.25A@220VAC
PF	0.90@220VAC		
Dimming Option	0-10V / DALI		
CCT	2700K / 3000K / 4000K / 5000K / 5700K / 6000K /6500K		
Luminous Flux	2000Lm	3000Lm	4000Lm
Efficiency	100Lm/W±5%		
LED Brand	Lumileds / Hongli 2835		
Driver Brand	Lifud		
Beam Angle	360°		
Operation Temp	-20°C ~+40°C		
Storage Temp	-20°C ~+60°C		
Life Span	Ta 40°C L70>54000 hours		
IP Class	IP40		
IK Class	PC IK08		
Certificate	CE, RoHS		
Lamp Body Color	Milky PC		
Product Size (mm)	∅75*552	∅75*1152	∅75*1452
Packing Size (mm)	730*260*260	1330*260*180	1630*260*180
Quantity / Carton	9PCS	6PCS	6PCS
Gross Weight (kg) ±0.3	13	12	14
Installation Mode	Surface mount / Suspension mount		