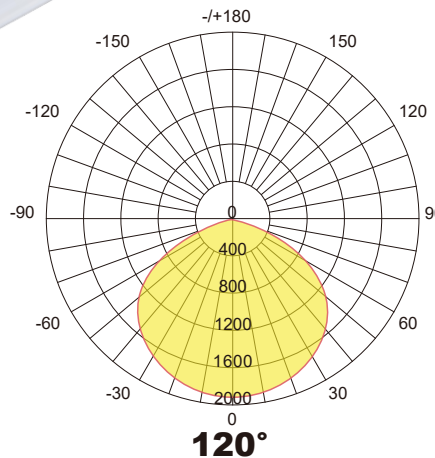


Easy Install LED Tri-proof Light L18

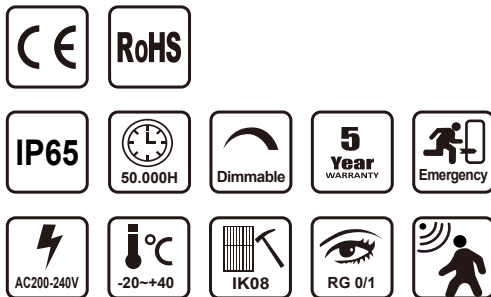
Features

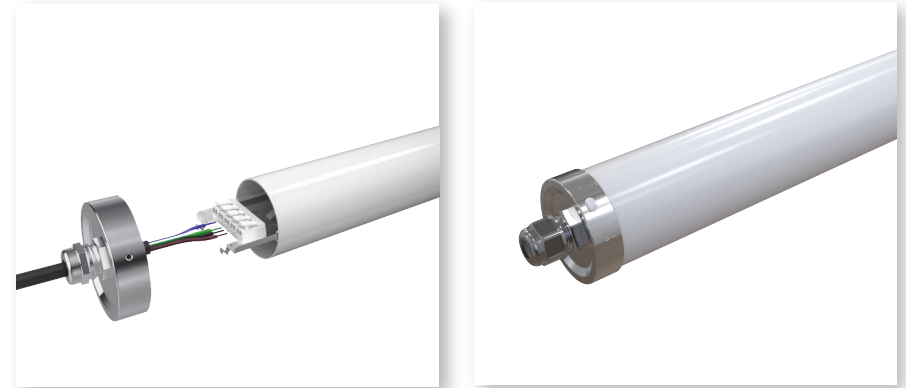
- Easy installation, modular design
- IP65
- PMMA IK08 / PC IK08
- Environmentally friendly, no mercury, no UV, no IR
- System efficiency up to 140Lm/W & 160Lm/W
- High CRI>85
- 5 year warranty
- Wide beam angle 120°
- Quick start instant 100% luminous flux
- Certificate: CE, RoHS, ENEC, CB certified
- Surface mount or suspension mount



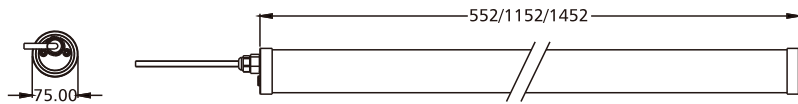
Applications

- Office buildings
- Warehouses
- Factory floors
- Restaurants and cafes
- Parking lots and garages
- Schools
- shopping malls
- Logistics centre

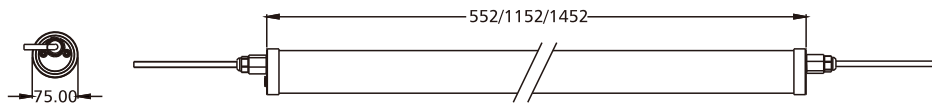




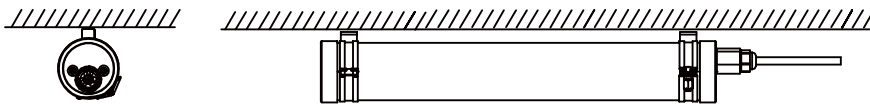
Single Installation



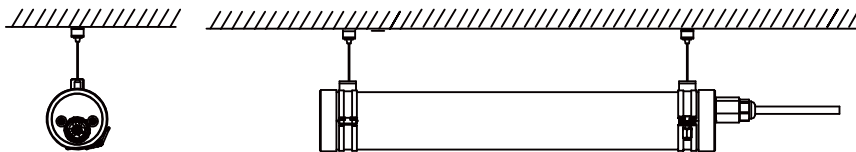
Linkable Installation



Surface Mount



Suspension Mount



Specifications

Product Code	TBL182F-20W	TBL184F-40W	TBL185F-60W
Power	20W	40W	60W
Input Voltage	200-240VAC / 100-277VAC (50/60Hz)		
Input Current	0.15A@220VAC	0.3A@220VAC	0.4A@220VAC
PF	0.95@220VAC		
Dimming Option	0-10V / DALI		
CCT	2700K / 3000K / 4000K / 5000K / 5700K / 6000K / 6500K		
Luminous Flux	2800Lm	5600Lm	8400Lm
Efficiency	140Lm/W±5% (Ra>85)		
Luminous Flux	3200Lm	6400Lm	9600Lm
Efficiency	160Lm/W±5% (Ra>85)		
LED Brand	Lumileds / Hongli 2835		
Beam Angle	120°		
Operation Temp	-20°C~+40°C		
Storage Temp	-20°C~+60°C		
Life Span	Ta 40°C L70>54000 hours		
IP Class	IP65		
IK Class	PMMA IK08 / PC IK08		
Certificate	CE, RoHS, CB, ENEC, IK08, IP65		
Lamp Body Color	Milky PC / PMMA housing & 304 / 316 stainless steel end caps		
Product Size (mm)	Ø75*552	Ø75*1152	Ø75*1452
Packing Size (mm)	730*260*260	1330*260*180	1630*260*180
Quantity / Carton	9PCS	6PCS	6PCS
Gross Weight (kg) ±0.3	13.4	12.2	15
Installation Mode	Surface mount / Suspension mount		