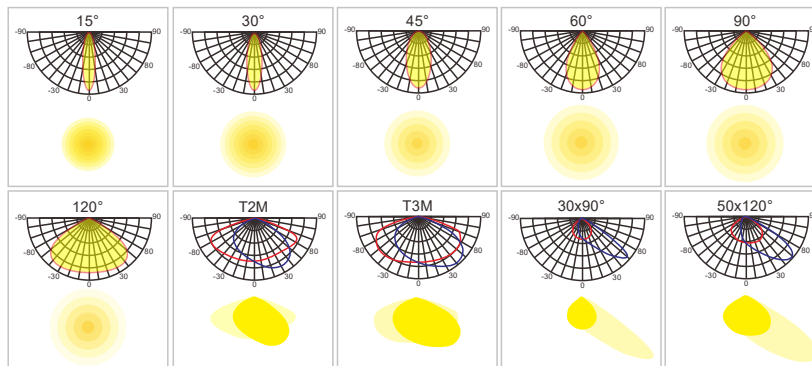
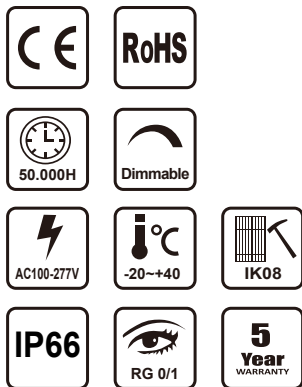


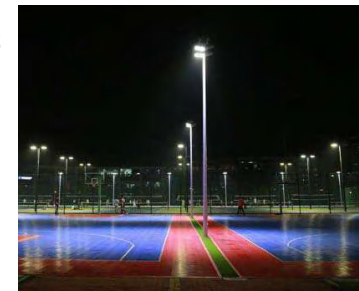
Features

- Patented private mold, integrated die-cast aluminum shell, fashion and simple appearance.
- High luminous efficiency up to 180lm/w.
- Professional anti-glare full cut-off light distribution: luminous Angle 15°/30°/60°/90°/120°/T2M/T3M/50*120 polarized light /30*90 polarized light is optional.
- 0/1-10V dimming, time control, light induction, Internet of Things control and other functions are optional.
- Large heat dissipation area, good heat dissipation effect, long service life of lamps.
- High temperature resistant tempered glass, surface paint process, excellent corrosion resistance
- The protection level reaches IP66.

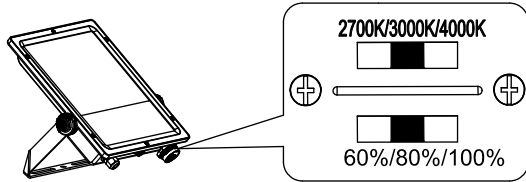
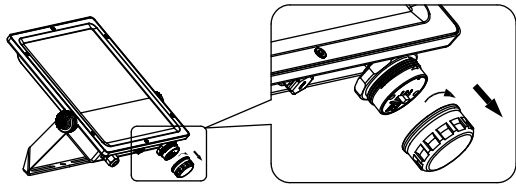


Applications

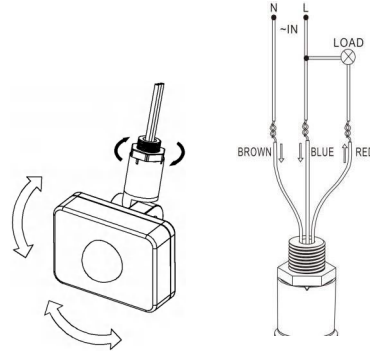
- Billboard
- Road
- Municipal square
- Bridge tunnel
- Sports stadium
- Construction site



Dimming version

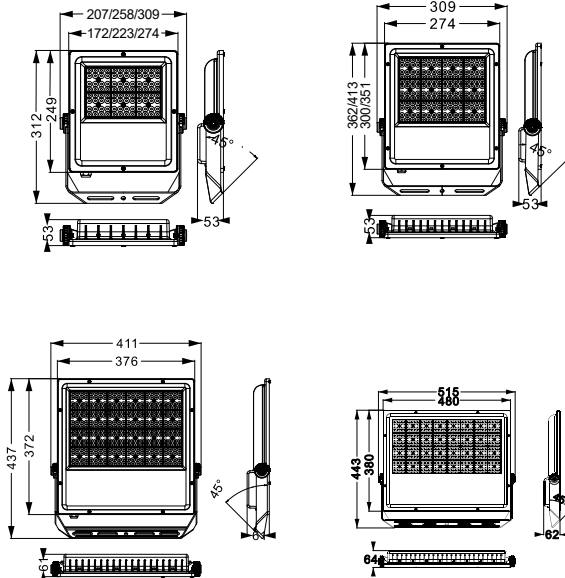


Induction version



Specifications

Size description



Product model	TG4-50W	TG4-75W	TG4-100W	TG4-150W	TG4-200W	TG4-300W	TG4-400W
Product size	312*207*53mm	312*258*53mm	312*309*53mm	362*309*53mm	413*309*53mm	437*411*61mm	515*443*62mm
Input voltage	AC100V-277V 50/60HZ						
Power	50W	75W	100W	150W	200W	300W	400W
Lamp bead type	EMC3030						
Bead quantity (16*1) lens	64PCS	96PCS	128PCS	192PCS	256PCS	384PCS	512PCS
Bead quantity (24*1) lens	96PCS	144PCS	192PCS	288PCS	384PCS	576PCS	768PCS
brightness (16*1) lens	4800-9600LM	11200-12800LM	14400-19200LM	24000-28800LM	32000-38400LM	48000-51200LM	60800-67200LM
brightness (24*1) lens	5400-1080LM	12600-14400LM	16200-21600LM	27000-32400LM	36000-43200LM	54000-57600LM	68400-75600LM
Color temperature (Warm white)	2700-3500K						
Color temperature (Natural white)	4000-4500K						
Color temperature (Cold white)	5000-6000K						
Luminous Angle (16*1) lens	30°/60°/90°/120°/15°/T2M/T3M/50°120° polarized light /30°90° polarized light						
Luminous Angle (24*1) lens	30°/60°/90°/120°/T2M/T3M						
Color rendering index	Ra>80						
Power efficiency	>90%						
Luminaire efficiency (16*1) lens	160lm/w						
Luminaire efficiency (24*1) lens	180lm/w						
Power factor	>0.95						
Life Span	Ta 40°C L70>54000 hours						
Harmonic wave	≤15%						
IP / IK Class	IP66 / IK07(glass) / IK10 (Metal case)						
Net product weight	1.78kg	2.1kg	2.65kg	3.38kg	3.72kg	5.80kg	8.14kg
Product certification	CE,CB,ROHS						